

Ted's News

July 2023

[Case History: Bradbury Park Playspace](#)
[You Need the Industry "Bible"](#)
[Something for My Christian Readers](#)
[Signup for One of my Eleven CPD Courses](#)
[Full Day Courses](#)
[New Course on Timber Bollards](#)
[Contact Me](#)

[Case History: Bradbury Park Playspace](#)



Finally, I can bring you a timber playground that truly is worthy of praise. When Ralph Bailey and I wrote [*Timber in Playgrounds*](#), we harboured a naive hope that playground designers, builders, and above all asset owners might invest \$55 to learn how to detail a timber playground for safety and longevity. Finally, the guide has been used on a playground, and not just any playground but a truly stunning playspace, arguably one of, if not the best in the country. Read the [longer report with the full list of credits here](#). [Here is a link to drone footage](#)

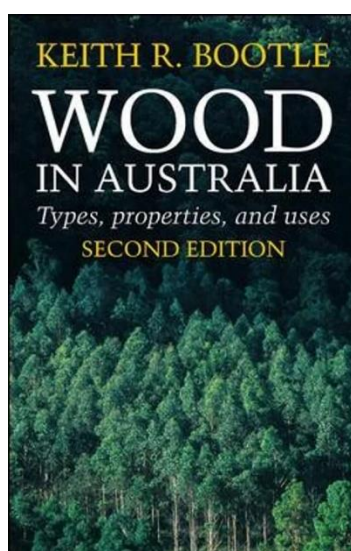


Young talented architects, Joel Alcorn and Chloe Middleton of [Alcorn Middleton Architects](#) in conjunction with [CUSP Landscape Architecture + Urban Design](#) were chosen to design this incredible playspace for Brisbane City Council. At Ralph Baily's suggestion, Joel and Chloe engaged me to assist with detailing. The images above show the use of [LifePlus slip-resistant decking](#), and corrosion-resistant paint added to galvanised posts in concrete ([covered in the April newsletter](#)). My advice also extended to paint finishes, decking oils, fasteners, and timber selection. What has been used here is Shou Sugi Ban Charred Jarrah supplied by Mortlock Timbers.



If you are going to spend serious money on playground infrastructure, you really should be talking to me. The guide has a design checklist that allows you to hone in on the issues that will cause problems and ensure they will be designed out. Want more images, [read my longer report](#).

[You Need the Industry "Bible"](#)



The article below about my latest book is not for everybody but it has led me to think about the industry "Bible", Bootle's *Wood in Australia*. Yes, it is known as the Bible and you really do need to have it in your professional library and refer to it often. It costs \$89 on Amazon Australia but its value to you can be priceless.

Recently I had a phone call from someone wanting to use a lot of recycled tallowwood which had been specified by an architect. Tallowwood is a very good choice when used within the limitations of that species and it does have limitations. We had worked through a lot of issues and then he mentioned the word, gluing!!

My first expert witness report was on some very expensive glued tallowwood furniture that started to fall apart after two weeks in the weather. Had the architect, who was being sued for the second time (American white oak failed

too) consulted the "Bible" he or she would have learned that it was a problem species to glue due to the greasy nature of the timber. So, I advised him to proceed with caution and not take any responsibility for a gluing failure.

When you are planning to mention a species in your specification, refer to the "Bible" first. it may just save you a lot of heartache.

Something for My Christian Readers

Pastor Served Al Dente, My fifth book with US publishers Wipf and Stock, has just been released. If you want to understand what makes me tick, you would find this chapter, [A Vocation not a Profession](#) of Interest. The contents are:

- Foreword by Fred Kornis
- Introduction
- A Vocation not a Profession
- Integrity and Gifting
- The Importance of Developing a Strong Character
- Someone who forgives
- Preaching to the Heart and not the Head
- A Person of Undivided Attention
- A Person with Compassion for the Weak
- The Servant of All
- Someone Who Listens
- What Really Goes Wrong
- Questions to Ask a Potential Pastor



Here are links to purchase a copy

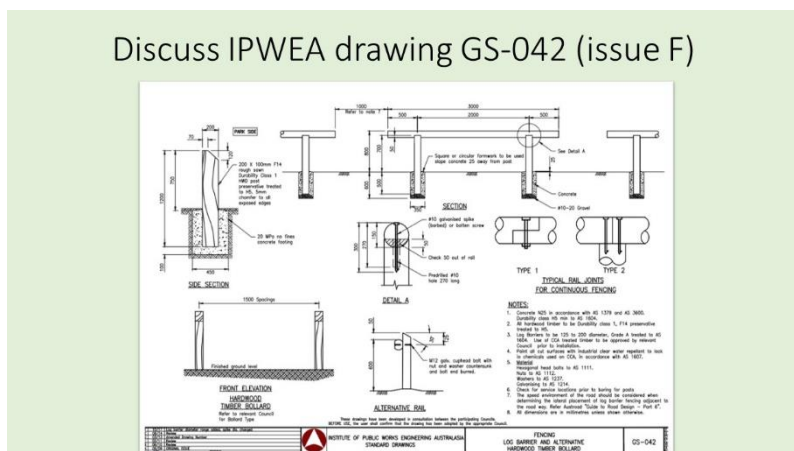
[Wipf and Stock](#)

[Amazon](#)

[Koorong](#)

New CPD Course - Timber Bollards

Discuss IPWEA drawing GS-042 (issue F)



I am putting the finishing touches to a new CPD course, *Timber Bollards*. The course will look at bollards in general and then look at issues with the Institute of Public Works drawing which does not follow industry guidelines such as Wood Solutions' excellent publication on bollards. Ring Stuart Madill for a booking on

0403 386 707. Outside of Queensland contact BCRC.

[Signup for One of my Eleven CPD Courses](#)



Learn from my four decades of experience with these CPD training sessions, some of which are available in eClassroom.

Topic 1	Timber Preservation	
Topic 2	Hardwood Grading	
Topic 3	Timber Decks - Designing for Durability	
Topic 4	Utilising Small Diameter Hardwood	
Topic 5	The Seven Deadly Sins of Timber Design	eClassroom link
Topic 6	Timber Joints	eClassroom link
Topic 7	Architectural Timber Battens	eClassroom link
Topic 8	Timber 101	eClassroom link
Topic 9	Boardwalk Design (recommend delivered with Timber 101)	
Topic 10	Timber Handrail Design	
Topic 11	Timber Bollards	

[Click here to learn more about these courses](#)

Are you aware that [Wilson Timbers/Outdoor Structures](#), who I am affiliated with and are suppliers of quality timber, will have me come to your office (in person or remotely) and deliver one or two of my CPD sessions for free? The only condition for in-person presentations is that, with travel, we can do it in a day from Brisbane in Queensland. [Contact Stuart Madill by email to arrange a time](#) or call his mobile 0403 385 707.

Contact Me



E Mail: edgarstubbbersfield@gmail.com

Phone: 0414 770 261

Web: www.deckwood.com.au

Full-Day Courses

 <p>The Footbridge Purchasing and Inspection Course run by Edgar (Ted) Stubbersfield is intended for those responsible for the specification, purchasing and ongoing maintenance of footbridges. The course will enable participants to:</p> <ul style="list-style-type: none"> • Prepare an appropriate specification • Assess suitable product to purchase • Recognise where corners are cut • Ensure value in purchasing • Know quickly where to inspect • Recognise suitable timber for bridges <p>I can offer valuable assistance to your organisation by empowering your people to recognise an appropriate low maintenance footbridge from one that requires expensive rectification over a shorter life span.</p> <p>On retiring from Outdoor Structures Australia, a company I founded in 1997, I have been concentrating on publishing guides on external timber and steel use and educating professionals in that field. You can now take advantage of my experience gained building low maintenance steel and timber bridges.</p> <p>I have extensive expertise in exposed timber applications. This knowledge was developed initially through a number of formal research projects followed by years of observation. I acquired a deep understanding of the issues relating to designing, supplying and constructing fully weather exposed timber and timber and steel structures including bridges.</p> <div style="text-align: right; font-size: small;"> <p>Contact Details Mobile: 0414 770 261 Email: edgarstubbensfield@gmail.com</p> </div>	 <p>The Coastal Deck Design Course run by Edgar (Ted) Stubbersfield is intended for those responsible for the specification, purchasing and ongoing maintenance of boardwalks and decks with emphasis given to the more difficult coastal environment. The course will enable participants to:</p> <ul style="list-style-type: none"> • Prepare an appropriate specification • Assess suitable product to purchase • Recognise where corners are cut • Ensure value in purchasing • Know quickly where to inspect • Recognise suitable timber for decks <p>I can offer valuable assistance to your organisation by empowering your people to recognise an appropriate low maintenance deck or boardwalk from one that requires expensive rectification over a shorter life span.</p> <p>On retiring from Outdoor Structures Australia, a company I founded in 1997, I have been concentrating on publishing guides on external timber and steel use and educating professionals in that field. You can now take advantage of my experience gained building low maintenance steel and timber bridges.</p> <p>I have extensive expertise in exposed timber applications. This knowledge was developed initially through a number of formal research projects followed by years of observation. I acquired a deep understanding of the issues relating to designing, supplying and constructing fully weather exposed timber and timber and steel structures including decks.</p> <div style="text-align: right; font-size: small;"> <p>Contact Details Mobile: 0414 770 261 Email: edgarstubbensfield@gmail.com</p> </div>
--	--

Don't embark on any major footbridge or coastal deck project before you do my full-day courses. These are serious courses run through [BCRC](#), the durability experts, that are unmatched in the value you will extract from them by delivering expensive infrastructure that ages gracefully and with little maintenance. They both start by going through a design checklist and explaining, line by line, why you must attend to that point. They then look at a number of case studies, showing good and bad practice.

[Click here for the footbridge course brochure](#)

[Click here for the coastal decks brochure](#)

Call me to discuss your training needs. These courses, which are eligible for CPD points, will give you an incredible understanding of good timber use. Call 0414 770 261 or [email me](#).

<u>Contact Me</u>	
	E Mail: edgarstubbensfield@gmail.com
	Phone: 0414 770 261



Web: www.deckwood.com.au

SPORTS & PLAY MEMBER
INDUSTRY ASSOCIATION LIMITED