

Timber With Ted

March 2024

[Free Online CPD Course](#)

[Why is this handrail 6.4 m continuous?](#)

[Case History - Mayes Canal Boardwalk](#)

[H5 Treated Pine Without CCA](#)

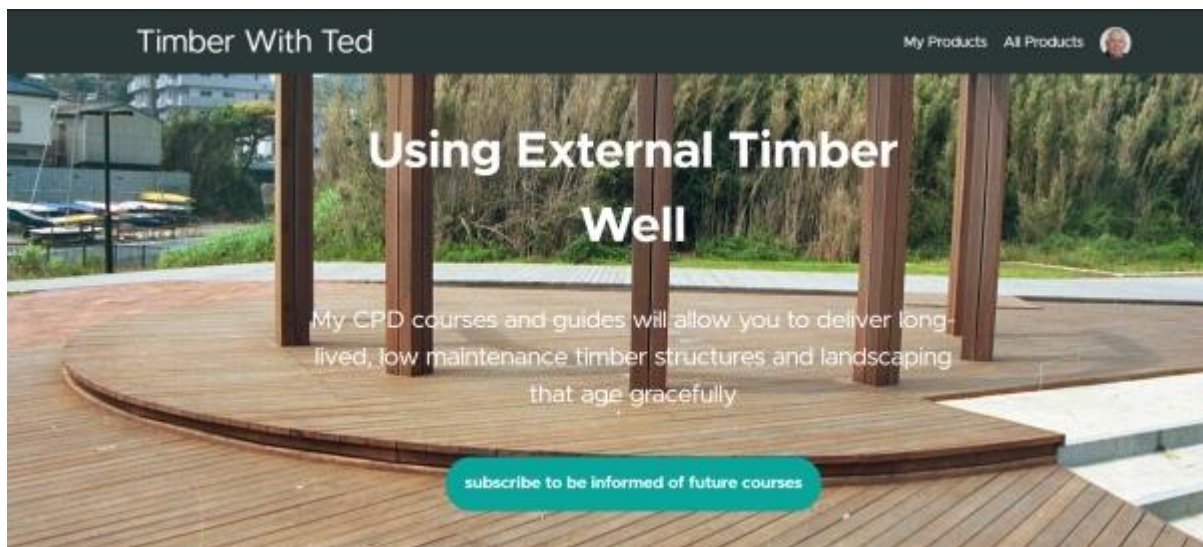
[Index of Past Issues](#)

[Signup for one of my Twelve CPD Courses](#)

[Full Day Courses](#)

[Contact Me](#)

[Free Online CPD Course](#)



I am now making my Continuing Professional Development courses available via the teachable platform with my new site www.timberwithted.com.au

As part of the launch, my first course, 'The Seven Deadly Sins of External Timber Design', will be available free of charge till the end of April 2024 by using the code 7SINSINTRO. The very helpful, but optional, technical guide of the same name is also available for purchase as a digital download on the site.

With your permission, I will copy your details across to the teachable website so I can keep you informed of new courses. They will cover topics such as architectural battens, commercial and domestic decks, handrails, timber grading, and preservation. Of course, I am still doing in-house presentations. Contact Stuart Madill 0403 385 707.to arrange a time. [Here is the list of subjects available.](#)

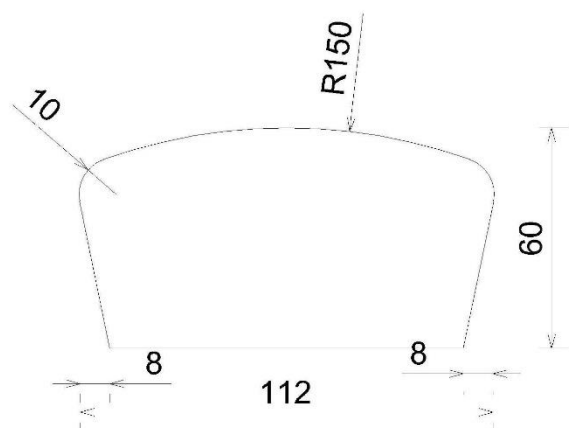
[Why is This Handrail 6.4 m Continuous?](#)



Recent image of a 25 year old handrail

My dear wife was in at the local shoe shop recently and I started talking to the proprietor. He reminded me of a handrail I sold him 25 years previously. It was 6.4, long in a single length. So why did I do this when joining it with a 4.5 and a 2.4 m was much easier? It is all down to the post spacing. The 4.5m length would have a centre support and the 2.1 m would not. Unfortunately, the short unsupported length would have taken a set downwards and it would not have looked as good. My wife's best friend (and his best customer) could say, 'It is as good as the day it was installed.' Your takeaway from this is to ensure your post spacings (or handrail design) are such that no length is unsupported.

The profile was what I called *Custom Rail 3* and was ex 125x75 ironbark, though spotted gum would have been as good. Notice the excellent water-shedding profile. A short time beforehand I had supplied a handrail order to Japan, in small quantities in a number of profiles. Japanese architects were courageous in spending their client's money but the tooling which cost thousands was then available for future use. It explains the unimaginative name! These products are still available from Wilson Timbers/Outdoor Structures Australia. Contact Stuart Madill 0403 385 707. Please don't give him a heart attack by asking for 6.4m long though.



CUSTOM RAIL 3

More information

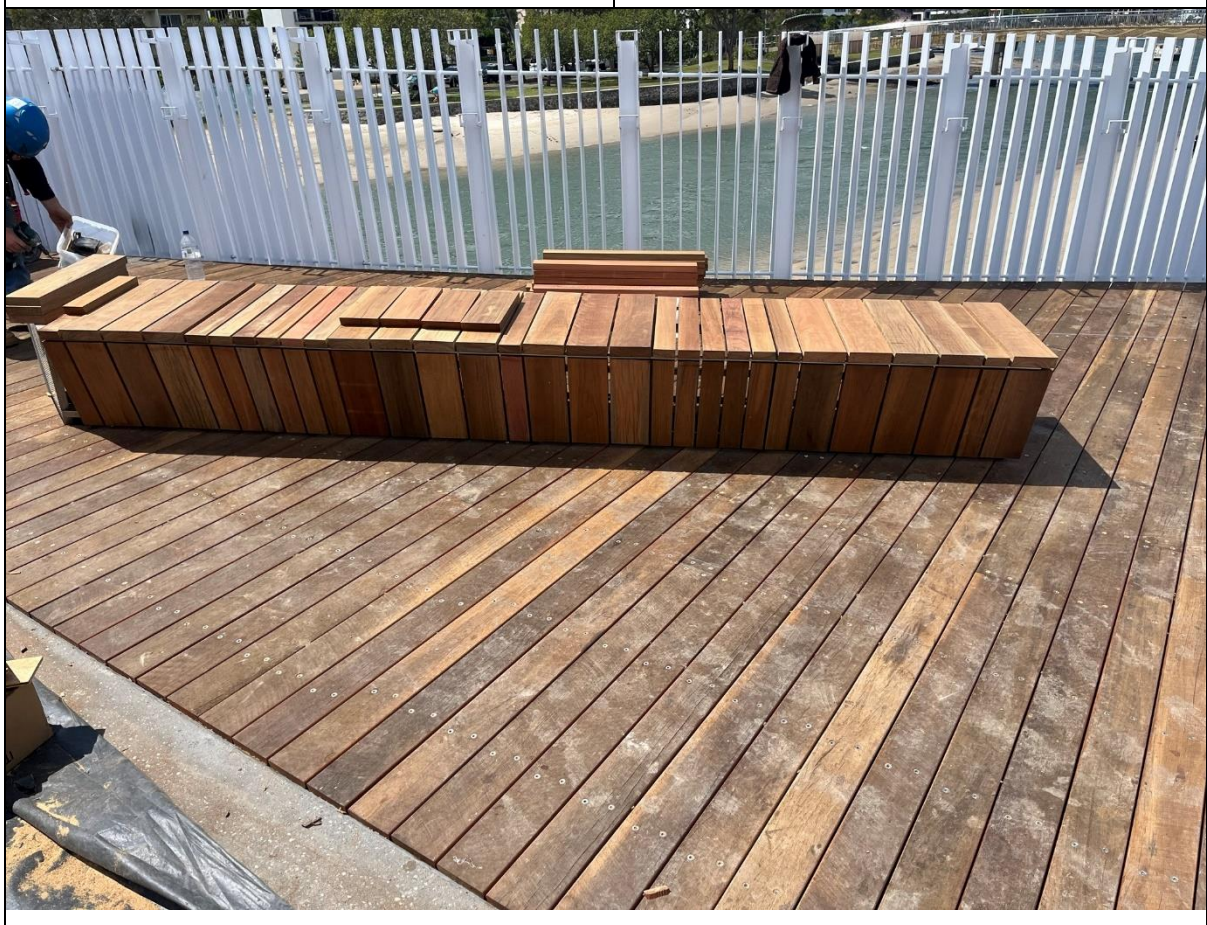
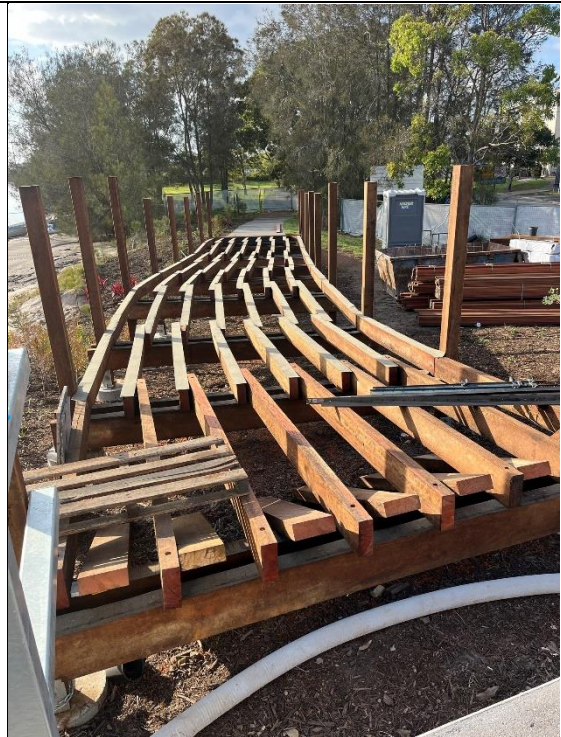
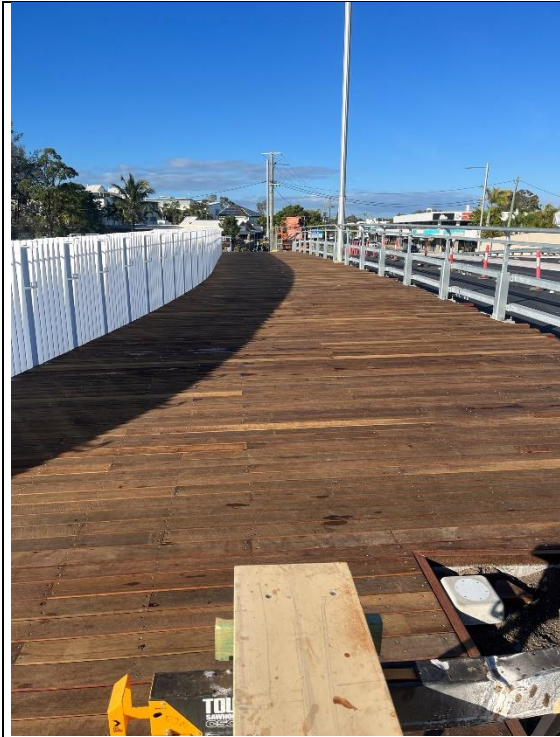
Order my [free guide to timber handrail](#)

Order my [Commercial Barrier Guide](#) with span charts - Cost \$22,

Download custom timber handrail [Autocad file](#) with handrail profiles (scroll down till you find it)

Important, Do not match any of my Custom Rail handrail profiles with a meaningless specification (in this application) like F14 or F17. Go to my free guide for an appropriate specification which is what Stuart will give you automatically.

[Case History: Mayes Canal Boardwalk](#)



Asset Owner: Sunshine Coast Regional Council

Prime Contractor: [Hall Contracting](#)

Timber Installation: Parker Precision Contact: [Nick Parkinson](#)

Decking timber: Deckwood by [Outdoor Structures Australia](#)

The deck at Mayes Canal incorporates most of the design features I espouse in my design guides and CPD courses. Overall, an excellent job. [Click here for more images](#) and an explanation of why the joists are lapped, the decking has a rough face, and the quality is so high. My [Deck and Boardwalk Design Essential](#) guide has a checklist to ensure you get the details right (cost \$55)

Last month I had to write a critique of a timber specification. I am sure it was written just after World War 2 and intended for timber cut with a buzz saw and when there was no preservation. It was truly appalling and impossible to supply as it was full of contradictions. The timber needed independent verification, I always recommend this, but how can you do this when there are contradictory clauses? Engaging me for my [Coastal Decks](#) course really is value for money.

[H5 Treated Pine without CCA](#)



Heavy freestanding CCA treated pole in a playground

Recently a friend was in trouble with a specification. He was building a playground and the posts were specified as H5 pine but not treated with Copper Chrome Arsenic. (CCA) preservative. This is how it should be. The problem was that while ACQ and Tanalith E are approved for this hazard level no one is actually doing it so it is only theoretically possible. There is insufficient demand for the product. The client was insisting on H5 so my client was staring down the barrel of paying many thousands of dollars to load a work tank at the treatment plant at the necessary solution strength just to treat 30 or so posts. So, he reached out to me. There was a simple solution. Treat to H4 with ACQ and then wait at least two weeks and retreat. AS 1604.1-2021 requires an extra 41% extra chemical to take the timber from H4 to H5 and this can be achieved by retreating after drying.

Now, doing this is a lot of humbug in a production sense and I don't think Lee would appreciate me mentioning his name so I won't, but it is achievable. If you have a problem like this, contact me. If you want to know how to engage with the ground you only need to purchase my guide, [Timber in Playgrounds](#) (\$55). Isn't it better to talk to me at the design stage rather than find out 15 years down the track that you should not have set a heavy free-standing item in concrete and is now starting to decay?

[Index to Past Issues](#)

If you are a new reader or just want to find details on a particular topic such as 150x150 mm posts, here is a link to an [index of articles back to 2015](#).

[Signup for One of my Twelve CPD Courses](#)



Are you aware that [Wilson Timbers/Outdoor Structures](#), who I am affiliated with and are suppliers of quality timber, will have me come to your office (in person or remotely) and deliver one or two of my CPD sessions for free? The only condition for in-person presentations is that, with travel, we can do it in a day from Brisbane in Queensland. [Contact Stuart Madill by email to arrange a time](#) or call his mobile 0403 385 707. Learn from my four decades of experience with these CPD training sessions,

Topic 1	Timber Preservation
Topic 2	Hardwood Grading
Topic 3	Timber Decks - Designing for Durability
Topic 4	Utilising Small Diameter Hardwood
Topic 5	The Seven Deadly Sins of Timber Design
Topic 6	Timber Joints
Topic 7	Architectural Timber Battens
Topic 8	Timber 101
Topic 9	Boardwalk Design (recommend delivered with Timber 101)
Topic 10	Timber Handrail Design
Topic 11	Timber Bollards
Topic 12	Domestic Timber Decks

[Click here to learn more about these courses](#)

Full-Day Courses

 <p>The Footbridge Purchasing and Inspection Course run by Edgar (Ted) Stubbersfield is intended for those responsible for the specification, purchasing and ongoing maintenance of footbridges. The course will enable participants to:</p> <ul style="list-style-type: none"> • Prepare an appropriate specification • Assess suitable product to purchase • Recognise where corners are cut • Ensure value in purchasing • Know quickly where to inspect • Recognise suitable timber for bridges <p>I can offer valuable assistance to your organisation by empowering your people to recognise an appropriate low maintenance footbridge from one that requires expensive rectification over a shorter life span.</p> <p>On retiring from Outdoor Structures Australia, a company I founded in 1997, I have been concentrating on publishing guides on external timber and steel use and educating professionals in that field. You can now take advantage of my experience gained building low maintenance steel and timber bridges.</p> <p>I have extensive expertise in exposed timber applications. This knowledge was developed initially through a number of formal research projects followed by years of observation. I acquired a deep understanding of the issues relating to designing, supplying and constructing fully weather exposed timber and timber and steel structures including bridges.</p> <p>Contact Details Mobile: 0414 770 261 Email: edgarstubbersfield@gmail.com</p>	<h1>Footbridge Course</h1>	 <p>The Coastal Deck Design Course run by Edgar (Ted) Stubbersfield is intended for those responsible for the specification, purchasing and ongoing maintenance of boardwalks and decks with emphasis given to the more difficult coastal environment. The course will enable participants to:</p> <ul style="list-style-type: none"> • Prepare an appropriate specification • Assess suitable product to purchase • Recognise where corners are cut • Ensure value in purchasing • Know quickly where to inspect • Recognise suitable timber for decks <p>I can offer valuable assistance to your organisation by empowering your people to recognise an appropriate low maintenance deck or boardwalk from one that requires expensive rectification over a shorter life span.</p> <p>On retiring from Outdoor Structures Australia, a company I founded in 1997, I have been concentrating on publishing guides on external timber and steel use and educating professionals in that field. You can now take advantage of my experience gained building low maintenance steel and timber bridges.</p> <p>I have extensive expertise in exposed timber applications. This knowledge was developed initially through a number of formal research projects followed by years of observation. I acquired a deep understanding of the issues relating to designing, supplying and constructing fully weather exposed timber and timber and steel structures including decks.</p> <p>Contact Details Mobile: 0414 770 261 Email: edgarstubbersfield@gmail.com</p>	<h1>Coastal Deck Course</h1>
--	----------------------------	--	------------------------------

Don't embark on any major footbridge or coastal deck project before you do my full-day courses. These are serious courses run through [BCRC](#), the durability experts, that are unmatched in the value you will extract from them by delivering expensive infrastructure that ages gracefully and with little maintenance. They both start by going through a design checklist and explaining, line by line, why you must attend to that point. They then look at a number of case studies, showing good and bad practice.

[Click here for the footbridge course brochure](#)

[Click here for the coastal decks brochure](#)

Call me to discuss your training needs. These courses, which are eligible for CPD points, will give you an incredible understanding of good timber use. Call 0414 770 261 or [email me](#).

Contact Me	
E Mail: edgarstubbersfield@gmail.com	
Phone: 0414 770 261	



Web: www.deckwood.com.au

SPORTS & PLAY MEMBER
INDUSTRY ASSOCIATION LIMITED